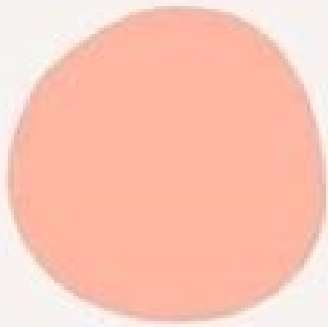


The background of the entire page is an abstract, organic pattern composed of irregular, overlapping shapes in three colors: a muted teal, a soft peach or light orange, and a dusty grey. The shapes are scattered across the page, creating a textured, layered effect.

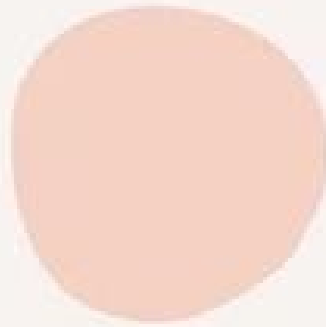
# SODA POP

This collection was inspired by vintage 1960's Retro color palette that would be perfect for an outdoor Mad Men picnic style event. Created for a line of Party essentials such as napkins, paper plates, party food boxes and etc.

---



CORAL



BLUSH



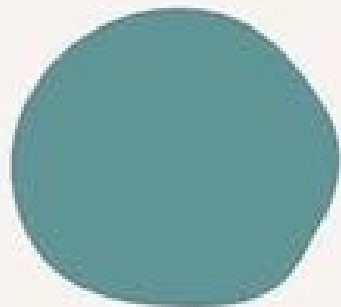
BUTTERSCOTCH



SMOKE



DUCK EGG



EMERALD SEA

# LET'S PARTY!

OH JOY FOR TARGET







